



BlueView™ Management System

Configuring, monitoring, and managing multiple WLANs has often required the time-consuming laborious task of touching multiple devices deployed in multiple locations. Bluesocket's BlueView™ Management System simplifies WLAN management by providing true centralized configuration and maintenance, policy-management, and monitoring capabilities for the BlueSecure™ Controllers and Access Points securing your WLANs.

Auto-Discover Your WLANs

BlueView automatically discovers BlueSecure Controllers across a configurable range of IP addresses or networks. Optionally, administrators can configure BlueView to discover and manage specific Controllers by entering individual devices. Once discovered, BlueView places BlueSecure Controllers and the Access Points associated with those Controllers into groups which can be based on organizational structure, location, or departmental management administration.

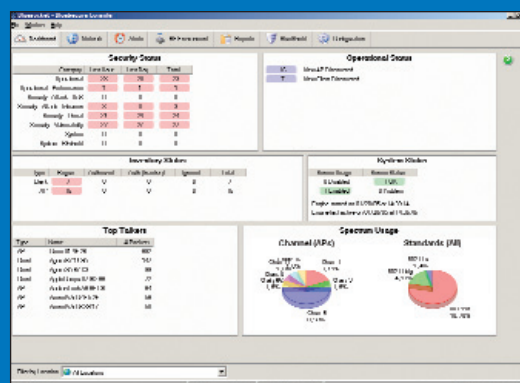
Monitor Your WLANs in Real-time

BlueView Management System polls the network to analyze the health and connectivity of your WLANs. Dashboard views give administrators complete system status of BlueSecure Controllers and Access Points enabling a quick response to any issue that may arise.

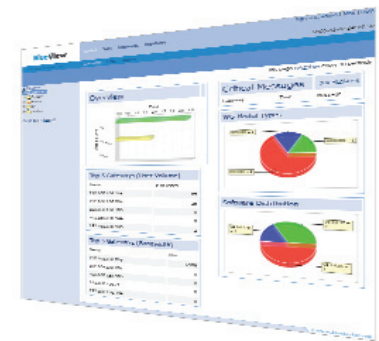
Schedule and Automate Maintenance Tasks

Do you want to upgrade your network from a single location? BlueView's powerful scheduling tool enables you to automate BlueSecure Controller and Access Point maintenance and provisioning tasks such as backing up and restoring configurations, pushing out policy or configuration changes, upgrading system software, and installing software patches.

As the demand for wireless connectivity in your organization grows, you can quickly roll out new WLAN deployments by using BlueView to provision, configure, and manage newly deployed BlueSecure Access Points and Controllers from a remote central location.



BlueView enables you to determine the operational status of your WLANs at a glance by providing concise visual summaries of network activity and configuration.



BlueView Management System

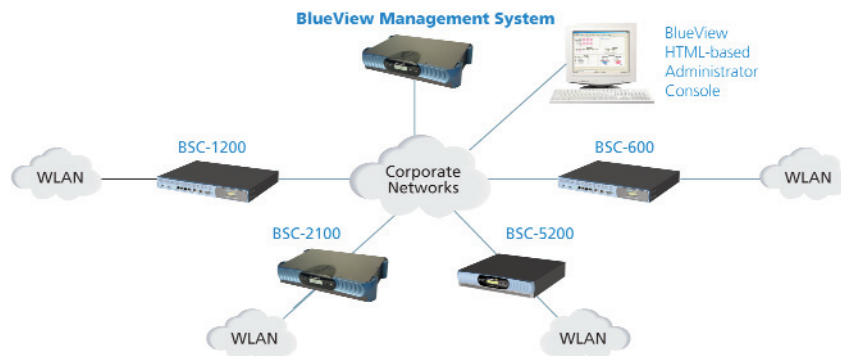
Centralized configuration, monitoring, policy enforcement and maintenance for your WLAN infrastructure.

FEATURES & BENEFITS

- Auto-discovery**
Automatically discover BlueSecure Controllers and APs across a configurable range of IP addresses or networks.
- Real-time Monitoring**
Display up-to-date information about your WLAN deployments in easily interpreted dashboard views.
- Automated Provisioning and Management Tasks**
Schedule and automate WLAN provisioning and maintenance tasks, allowing consistent rollouts across the enterprise, while lowering cost of operations.
- Scalability**
Deploy new, secure WLANs and scale your existing WLAN infrastructure rapidly and efficiently to meet your business needs.
- Optimized WLAN Performance**
Monitor and manage available bandwidth on your WLAN deployments using policy-based bandwidth controls.
- Secure, Remote Management**
Manage your WLANs using secure remote SSL connections.
- Centralized Policy Enforcement**
Define and distribute role-based policy configurations governing access, VLANs, Services, and Bandwidth/QoS.
- Centralized Alarm and Log Management**
BlueView serves as the central repository for WLAN event information.



HOW IT WORKS



The BlueView™ Management System eliminates the labor-intensive task of configuring multiple devices deployed in multiple locations by enabling you to provision, configure, and manage all of your WLAN deployments remotely from a central location.

Optimize the Performance of Your WLANs

The BlueView Management System enables you to monitor and optimize the performance of your distributed WLANs. From a central location, a network administrator can monitor performance across all BlueSecure Controllers. BlueView then allows for troubleshooting and management of the available bandwidth using policy-based bandwidth controls by user, role, device, or services being used.

Securely Manage Remote WLANs

Establish secure remote connections (SSL) to BlueView over the Internet and use its intuitive Web-based administrator console to monitor, manage, and configure the BlueSecure Controllers and Access Points securing your WLANs.

Enforce Centralized Policy Rollouts

BlueSecure Controllers (BSCs) use role-based access control to define which network resources and destinations a user may access, the bandwidth available for the user/role, and whether the user's traffic is required to be encrypted (e.g., using IPSec, L2TP or PPTP). Using BlueView's powerful configuration template editor, you can define roles that enforce network usage policies and then push these configurations out to either individual BSCs or groups of BSCs on your network to ensure uniform policy enforcement across your entire enterprise.

Centralized Alarm and Log Management

BlueView serves as the central repository for alarms and logs from managed BlueSecure Controllers. BlueView intelligently interprets alarms and logs and generates sortable and filterable tables for administrator review. Administrators can associate an action (e.g., sending an email notice) with received alarms, and define maximum log and alarm database size and entry count parameters.

BlueView Management System Specifications

PHYSICAL DIMENSIONS

Width 17.5 inches (445 mm)	Depth 17.5 inches (445 mm)	Height 3.6 inches (88 mm) - 2U
NETWORK INTERFACES Two 10/100/1000 Ethernet copper interfaces	STORAGE High-speed disk drive database accommodating up to 120 GB	POWER Power Supply: 350 Watt auto-sensing, 110/240 VAC @ 47/63 Hz

ENVIRONMENTAL

Operating Temperature 50° to 95° F (10° to 35° C)	Humidity 40 to 80% non-condensing
---	---

APPROVALS

FCC, VCCI, CE and UL	COMMUNICATION PROTOCOLS XML-RPC; SNMP v2c, v3
----------------------	---

bluesocket 
The leader in secure mobility® solutions

For more information, visit our website at www.bluesocket.com

Corporate Headquarters
10 North Avenue
Burlington, MA 01803
USA
+1 781 328 0888

For all other regions including Europe, Middle East, Africa and Asia/Pacific, please visit: www.bluesocket.com/company-contact-us.htm

© 2007 Bluesocket, the Bluesocket logo, BlueSecure, and Secure Mobility are trademarks or registered trademarks of Bluesocket, Inc. All other trademarks, trade names and company names referenced herein are used for identification only and are the property of their respective companies. 0707