



AirMagnet Enterprise Analyzer FOR THE ARUBA MOBILE EDGE ARCHITECTURE



The AirMagnet Enterprise Analyzer for Aruba is a software-only Wi-Fi troubleshooting and help-desk solution designed specifically for Aruba's Mobile Edge Architecture. The Enterprise Analyzer software works with existing Aruba controllers and access points to collect Wi-Fi data for expert analysis. AirMagnet's signature AirWISE engine automatically pinpoints more than 130 types of wireless factors that can impact network performance, then generates alarms with detailed explanations of events and advice on corrective actions. Network managers can also remotely troubleshoot wireless problems in real-time without having to travel on-site, and even have the option to generate legally validated regulatory compliance reports. The result is a much faster and cost-effective way to solve wireless issues while making the most efficient use of WLAN hardware resources.

WIRELESS LAN ANALYSIS AND TROUBLESHOOTING

Remote WLAN Troubleshooting

Automated WLAN Analysis

AirWISE® Expert Advice

Wi-Fi Interference Analysis

Remote Connectivity Testing

**Reporting and Compliance Auditing
(Optional)**





AirMagnet Enterprise Analyzer

FOR THE ARUBA MOBILE EDGE ARCHITECTURE

How it Works

- 1. AirMagnet Enterprise Analyzer Software:** The AirMagnet software runs on most any Windows desktop or laptop PC. The software connects to any available Aruba WLAN Controller to receive wireless traffic for analysis. The AirMagnet Enterprise Analyzer continuously works in conjunction with the controller to remotely control AP channel scanning for optimal packet capture. This coordination provides end-users with the same quality of analysis as if they were on-site with a stand alone AirMagnet Enterprise Analyzer.
- 2. The Aruba Mobility Controller:** The Aruba controller allows the user to choose an appropriate AP to use for analysis and brokers the connection between the AirMagnet Enterprise Analyzer and the Aruba APs.
- 3. Aruba APs:** Aruba APs in either AP Mode or Air Monitor Mode continuously capture wireless traffic and passes the data back to AirMagnet for analysis via the Aruba controller.



AirWISE: Built-In Wireless Expertise



At the heart of the Enterprise Analyzer is the AirWISE® engine, which automatically detects the root-cause of dozens of Wi-Fi issues across 802.11a/b/g networks. AirWISE® eliminates the need for users to manually interpret complex packet decodes and wireless data by proactively identifying and explaining more than 130 threats and performance issues before they impact the network. The user-friendly AirWISE® interface explains alarms in straightforward details, provides access to additional diagnostic data, and offers advice on corrective actions.

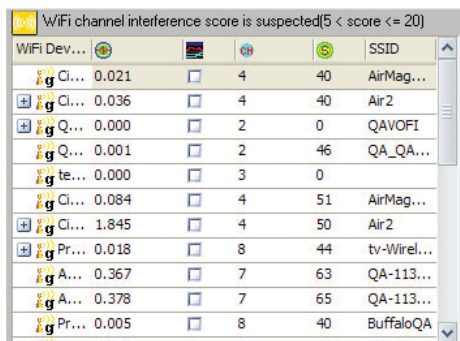
Pinpoint the Cause of Any WLAN Problem

When a user reports a WLAN problem the real cause is usually not clear, especially if the end user is in a remote location. The AirMagnet Enterprise Analyzer lets network managers reach out to the source of the problem and immediately pinpoint the root-cause. The AirMagnet Enterprise Analyzer detects all types of wireless factors including interference issues, congested APs and channels, and automatically identifies specific device configurations that impact performance. AirMagnet Enterprise Analyzer alerts on dozens of traffic flow problems, media conflicts, QoS issues and much more. In addition to performance issues, AirWISE also performs a full security vulnerability analysis and detects all known types of wireless intrusions and hacking tools. This provides network staff with immediate, specific answers in a fraction of the time of manual investigation.

Built-in Expert Advice

AirWISE provides detail on every Wi-Fi alert including the specific device and channel at the heart of the problem. AirWISE goes beyond the simple act of generating an alarm by explaining the background issue and technology related to the event, including instructive illustrations and advice on how to resolve or prevent the problem. This encyclopedic knowledge lets network managers use the application with a bare minimum of training while expanding their knowledge of wireless networking.

Wi-Fi Interference Analysis



WiFi channel interference score is suspected[5 < score (<= 20)

WiFi Dev...	Score	Channel	Power	SSID
g Ci...	0.021	4	40	AirMag...
g Ci...	0.036	4	40	Air2
g Q...	0.000	2	0	QAVOFI
g Q...	0.001	2	46	QA_QA...
g te...	0.000	3	0	
g Ci...	0.084	4	51	AirMag...
g Ci...	1.845	4	50	Air2
g Pr...	0.018	8	44	tv-Wirel...
g A...	0.367	7	63	QA-113...
g A...	0.378	7	65	QA-113...
g Pr...	0.005	8	40	BuffaloQA

Interference Analysis

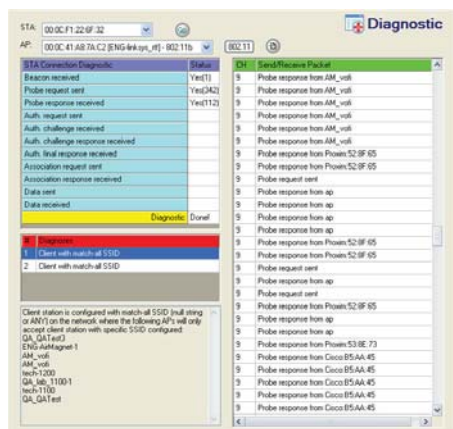
Dedicated Interference View

RF interference and competition from other wireless devices are a constant source of performance problems for a wireless LAN. The AirMagnet Enterprise Analyzer includes a dedicated interference page that clearly explains the overall quality of the airwaves, and the types of interference impacting network performance.

AirMagnet's Interference Page accounts for 3 unique sources of interference, including Wi-Fi and non-802.11 sources. At the most fundamental level, AirMagnet analyzes noise and SNR to display the impact of non-802.11 devices on a particular channel. The software also accounts for co-channel and adjacent channel interference from Wi-Fi devices and displays precisely how much of your available bandwidth is consumed by each device. Finally, the software tracks and displays a consolidated list of hidden stations that can impact performance on the channel. This list allows staff to immediately grade the quality of their airwaves and pinpoint the cause of Wi-Fi interference.

Remote Troubleshooting Tools

In addition to providing expert wireless LAN analysis, the AirMagnet Enterprise Analyzer includes a suite of troubleshooting tools enabling network managers to further investigate problems in any remote location where lightweight access points are deployed.



Connection Diagnostic Tool

Connection Troubleshooting

Directly troubleshoot connectivity problems between any client and AP in the network by viewing the step-by-step progress of a connection to pinpoint where the process is breaking down.

Signal Quality Tool

With the Signal Quality Tools, network managers can identify very rapid fluctuations in signal quality that go overlooked by traditional signal measurements. This enables managers to see if a wireless signal is stable and predictable, while also providing the ability to actually see the presence of multipath in the environment.

Jitter Testing

The Jitter Tool allows managers to measure the jitter between any phone and AP to help diagnose the source of voice problems.

Vulnerability Assessment

The AirMagnet Enterprise Analyzer provides an ideal complement to Aruba's built-in security and IDS features by offering an automatic audit of the wireless environment to detect over 60 wireless vulnerabilities and threats.



AirWISE Alarm

Vulnerability Assessment

The AirMagnet Enterprise Analyzer provides a complete, ongoing audit of Wi-Fi authentication and encryption at both the device and network level, and constantly scans the environment for weaknesses, such as insecure device configurations and vulnerable stations.

Threat Detection

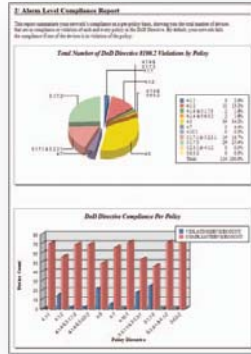
AirMagnet also detects scores of active threats that can endanger the network. The solution detects 20 types of denial-of-service attacks and dozens of wireless hacking tools and intrusion strategies. As always AirMagnet provides real-time detail on any offenders and can even generate email and syslog alerts.

Integrated Reporting and Compliance Audit

AirMagnet offers an optional reporting and compliance auditing module. With the touch of a button, network managers can turn their analysis sessions into customized reports, or even perform a complete compliance audit of their wireless environment.

Integrated Reporting

The integrated reporting feature delivers professional documentation of any Wi-Fi analysis or troubleshooting session. Users can leverage a library of pre-built professional reports or generate their own targeted reports. Reports cover all areas of management including RF statistics, device reports, as well as security and performance event reports.



Compliance Reports

AirMagnet provides detailed compliance reports covering a variety of regulatory standards including SOX, HIPAA, PCI-DSS, DoD, GLBA, FISMA, Basel II, ISO 27001 and EU-CRD. Each report provides a step-by-step pass/fail assessment of each section of the standard and shows all non-complying devices. This makes it easy for companies to audit and document their regulatory compliance quickly and easily.

Product Facts

Part #	Description
A2010	Enterprise Analyzer for Aruba Starter Kit; Single company license limited to a maximum of 3 Aruba Controllers
A2015	Enterprise Analyzer for Aruba; Single company license with support for unlimited number of Aruba Controllers
A2017	Unlimited Session Module; Requires A 2010 or A2015 license
A2018	Reporting Module; Requires an A2010 or A2015 license

Minimum System Requirements

Microsoft® Windows 2000 (Service Pack 4 or later) or XP (Service Pack 2) / Tablet PC Edition 2005 (Service Pack 2)

Intel® Pentium® III (1.6 GHz) or Higher. (Pentium® M 1.6Ghz or higher recommended)

256 MB Memory (512 MB recommended)

100 MB Hard Disk Space

Request a Software Demo at: <http://www.airmagnet.com/products/demo-download.php?demo=eaaruba>

Contact Sales Online: http://www.airmagnet.com/company/contact_airmagnet.php?type=sales

Visit AirMagnet at www.airmagnet.com

Copyright © 2007, AirMagnet, Inc. All rights reserved. 02/20/07 EAArubaDS v1.

Corporate Headquarters
1325 Chesapeake Terrace
Sunnyvale, CA 94089 - United States
Tel: +1 408.400.0200 / Fax: +1 408.744.1250

EMEA Headquarters
St Mary's Court The Broadway, Amersham
Buckinghamshire, HP7 0UT - United Kingdom
Tel: +44 1494 582 023 / Fax: +44 870 139 5156

